

COLEMAN-MACH BLUETOOTH CEILING ASSEMBLY INSTALLATION

This is intended to be a supplement to the instructions provided with the assembly, not a replacement.

The only tools required are a Philips head screwdriver (preferably powered) and a utility knife.

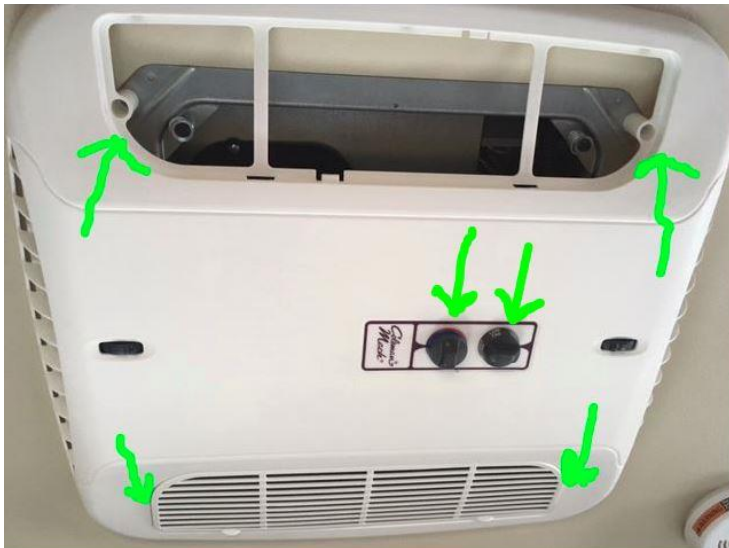
Installation time, allow 1.5 to 2 hours.

TURN OFF THE CIRCUIT BREAKER FOR THE AIR CONDITIONER BEFORE STARTING!

Here is what comes in the box (along with the instructions):



Remove the existing ceiling assembly cover by taking out the grilles covering the filters and removing the filters and pulling off the control knobs. Then remove the four corner screws.



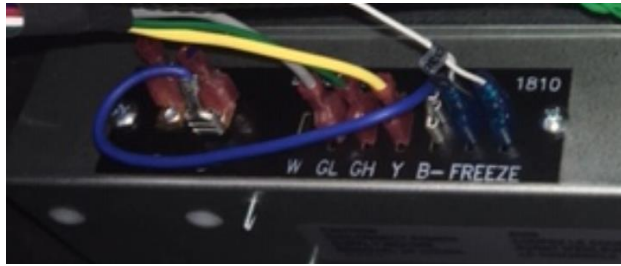
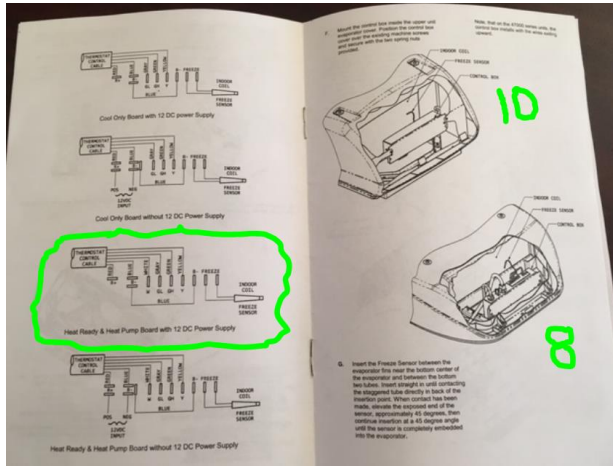
Next remove the rest of the ceiling assembly. Four corner screws and three screws holding the cloth duct assembly.



Then remove the power and control wiring.



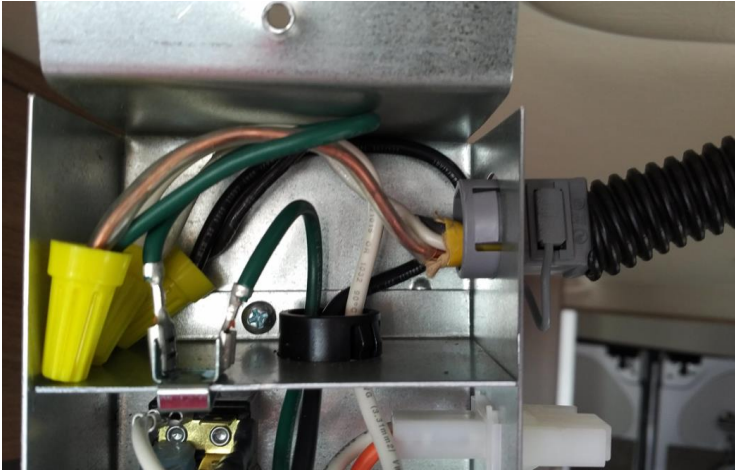
Connect all of the color-coded wires that came in the packaging to the new Control Box before installation. Note that the control box will be installed with the wires facing down on a newer Mach 10 unit and facing up on an older Mach 8 unit.



NOTE: In most cases you will have purchased the “Cool Only” assembly. If for some reason you receive the “Heat Ready” version it will look slightly different and have a connection for a white wire and plug but you can still use it without issue. (Below, Heat Ready is the top picture, Cool Only is the bottom one.)



Remove the cover from the Control Box and attach the power wire using the provided electrical connector fitting and wire nuts.



Then install the assembled and pre-wired Control Box into the upper evaporator cover on the existing mounting screws that are in the opening. These are on the side of the A/C unit closer to the front of the van. Again, the box is installed with the wiring facing down for the Mach 10 and up for the Mach 8.



The Control Box is held in place with speed nuts.



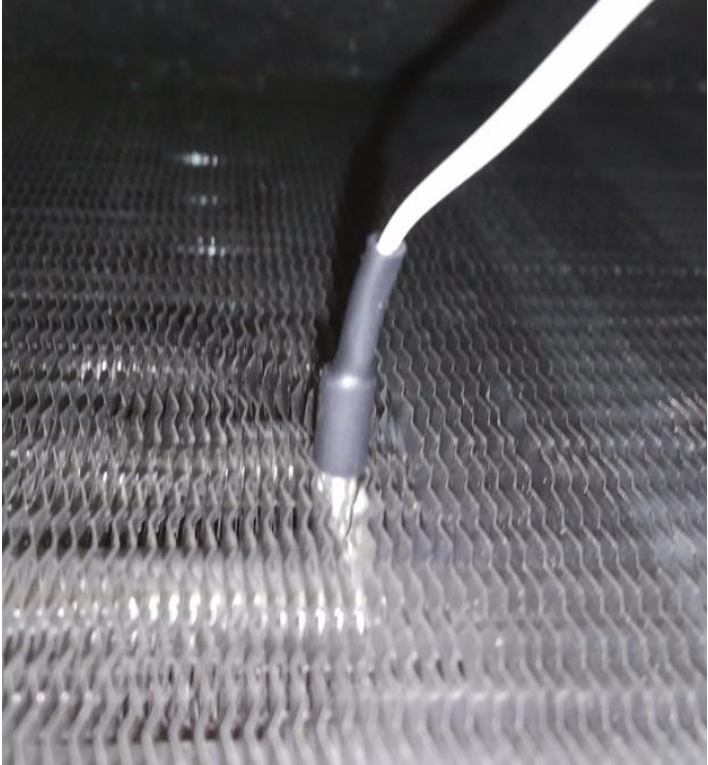
OPTIONAL ASSEMBLY NOTE: If you have difficulty positioning the Control Box in the provided space due to the protruding long bolts that hold the inside frame in place, retract one or both of the 8mm hex-head bolts (additional tool required) from each side of the opening about 3 to 4 inches to provide better access. Once the Control Box is positioned and secured, re-tighten the long bolts, fully compressing the spring washers.



The green bundle of wires that was plugged into the original ceiling assembly plugs into the Control Box.



Insert the Freeze Sensor into the face of the coils on the opposite side of the opening from the Control Box. (NOTE: It's MUCH easier to see to do this if you have a light shining on the opening so you can see the coils behind the metal mesh covering.)



Follow steps 1 – 4 of Part VII of the instructions INSTALLING THE CEILING ASSEMBLY and install the cloth duct assembly and the new ceiling assembly base. Use your utility knife to remove the excess duct material. Attach the plug coming from the wiring you attached to the Control Box to the corresponding socket on the new ceiling assembly base. Attach the Room Sensor on one of the screw holes on the side of the ceiling mounting plate like shown circled in this picture (gently hand tighten only).



Room Sensor:



Install the new BT Ceiling Assembly to the ceiling assembly base reversing the procedure of how you removed the original one. (Now you can turn the A/C circuit breaker back on.)



Now you can operate the unit with the controls you see and/or proceed with Bluetooth operation.



This supplement is a collaboration between Greg Schultz and Sam Pellegrino, dated 2/16/19.