

INSTRUCTIONS FOR REPLACING PC BOARD ON BLUETOOTH CEILING ASSEMBLIES

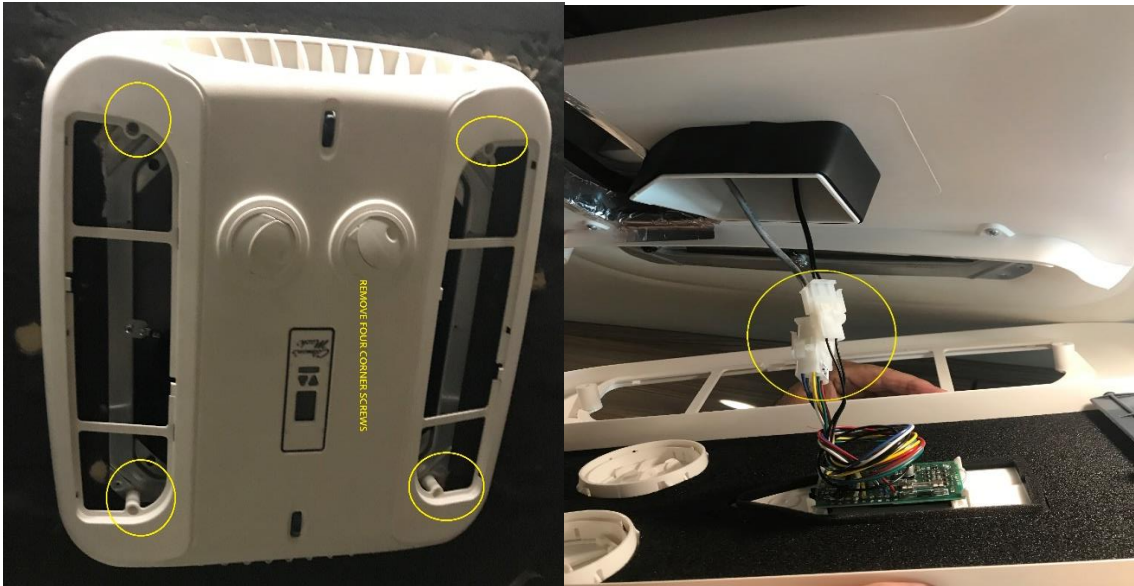
TOOLS REQUIRED: Phillips-Head Screwdriver, Hot melt glue gun and hot melt glue

1. Disconnect the power.
2. Remove the grilles and filters.

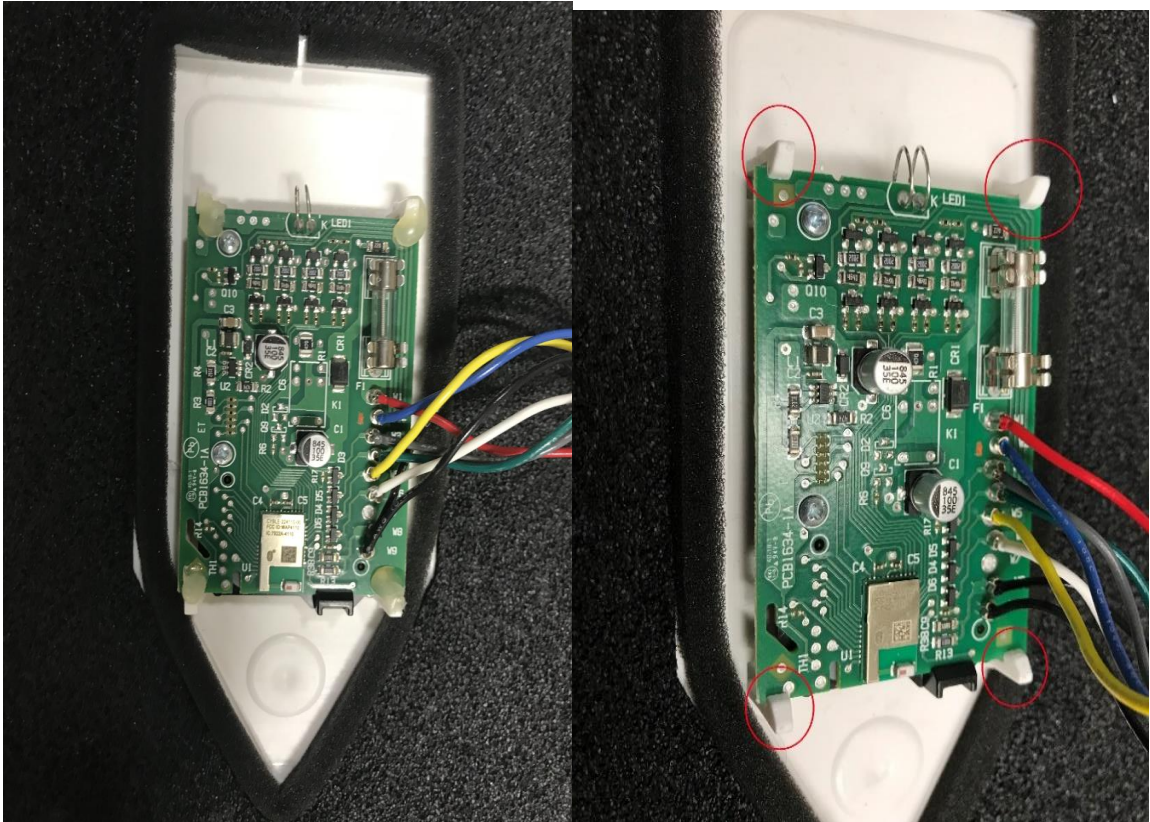




3. Remove four corner screws. If there is tape inside, remove it. Be careful as the part may fall. Slowly pull the outer shroud by 3"-4" to access the wires connected inside (Please see below photos)



4. Disconnect the 6-pin plug and 2-pin plug connected to PC Board.
5. Now outer shroud is totally separated. Look for the four posts that hold the PC Board. A glue may or may not be applied to the PC Board.
6. Peel off the glue. Remove the existing board by bending 4 plastic tabs. Be gentle while bending the tabs as it is easy to break.



7. Snap in the new board.



8. Make sure that buttons are aligned correctly and can be accessed.

9. Apply hot glue between the board and posts.

